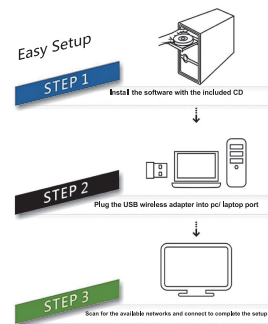


## USB Bluetooth Adapter

### User Manual



### Installation

To avoid software confliction, please uninstall any previously installed third-party Bluetooth drivers or management software on your computer before installing the bluetooth driver software.

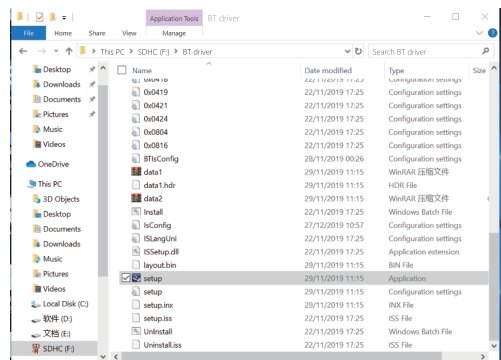
The Default Bluetooth drivers provided by Microsoft Windows have limited functionality, it will installed automatically after you inserting the USB adapter, you still need to install the full driver software on CD if you want to access full functionality (more Bluetooth profiles supported).

### System Requirement

- Supported Operating System: Windows 7/8.1/10/11(32/64 bit),
- CPU Speed: 500MHz or higher
- Hard Drive Space: 500 MB
- RAM: 1GB or more

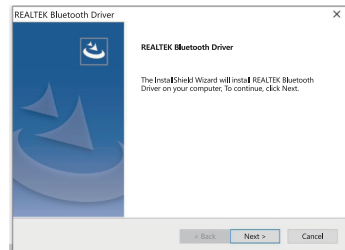
#### • Installing Drivers from the CD

Connect Bluetooth adapter to computer, Open the CD in Windows Explorer and run Setup.exe under Windows folder

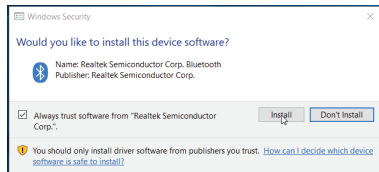


#### • Auto Installation Program

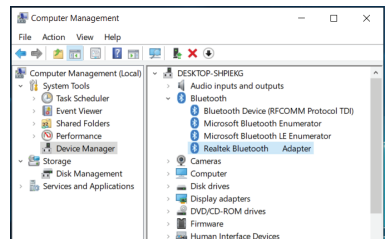
Click Next to start installation



Click Install if there is a Warning window, check Always Trust software from "Realtek Semiconductor Corp", you need to restart the computer after installation finished.

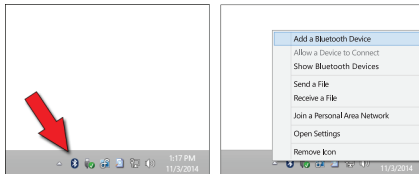


You will find "Realtek Bluetooth Adapter" under Device Manager after driver software installed successfully.

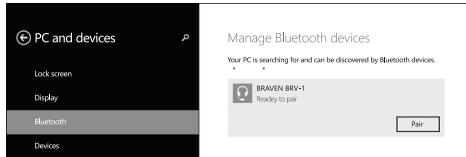


### Pair Your Devices

The Bluetooth icon should appear in the system tray after driver installed. Right-click the icon and choose "Add a Bluetooth Device" from the context menu.



If you're using Windows 10, you'll see a screen like below. Just click the Pair button for the device you want to connect.



If you're using Windows 7, you'll see a similar screen, select the device you want to connect and then click Next.

#### • Pairing a Device that Doesn't Show Up Automatically

If for some reason your device doesn't appear below, click the "Add Bluetooth or Other Device" button located at the top of the Settings window.

